



# Ribbel

La tua idea di valvola



**Company profile**

# About Ribel

---



## YOUR INNOVATIVE BALL VALVES SUPPLIER

Ribel is a young and dynamic Italian company, born from the desire to produce innovative ball valves, able to **match perfectly** to applications needs and requirements of different industries.

Our know-how is the result of many years of fieldwork: Ribel valves are the **innovative** and perfectly interchangeable solution you are looking for, which will allow you to solve the typical and frequent criticalities of the valve world.

Ribel supports the energy transition towards alternative energy sources: our ball valves are able to intercept new energy vectors and fuels, such as **hydrogen**.

# About Ribel

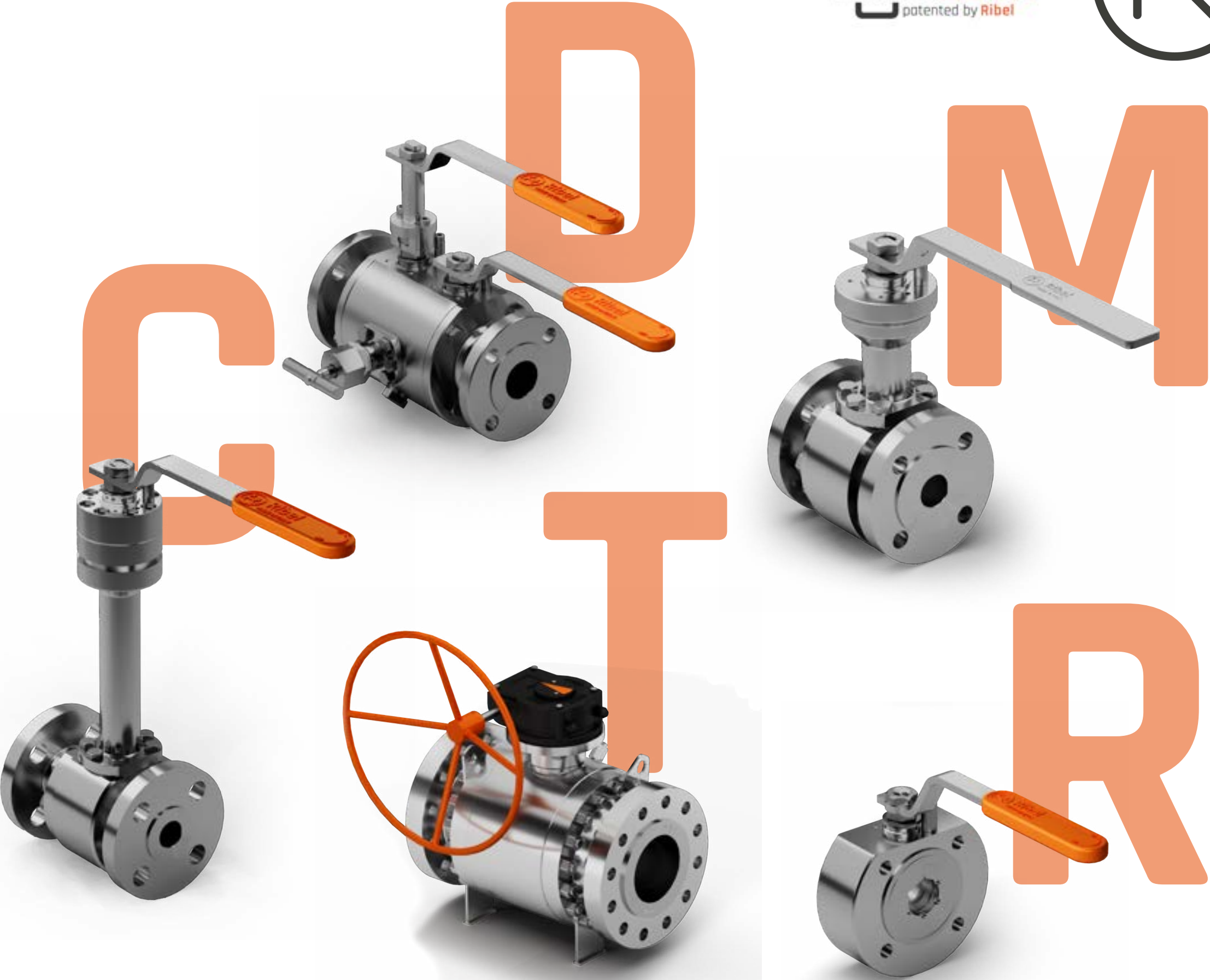
ZheroLeak  
patented by Ribel



## PRODUCTION RANGE

The commitment to **technological innovation** and attention to **customisation** requirements are our mission.

Our production range is constantly developing to respond to the ever-changing industrial landscape.



# About Ribel



Design standards				Manufacturing standards	
Body	ASME VIII Div. 1			BS 5146 Double Antistatic Device	
	ASME B16.34			ISO 5211 Valve - Actuator coupling	
	EN 12516-2			Double Body Seal	
Connections	ASME B16.5	ASME B16.11	ASME B16.25	Quintuple Stem Sealing System ZHEROLEAK®	
	ASME B1.20.1	UNI EN 1092.1	ISO 228-1	Anti blow-out stem	
Test standards				Certification standards	
ASME B16.34	API 598	API 6D	BS5351	PED 2014/68/UE	ATEX 2014/34/UE
EN ISO 17292	EN 12266-1	ISO 14313	ISO 5208	ISO 15848-1	FIRE SAFE ISO 10497

Low Fugitive



Emission



Fire Safe



# About Ribel

---



## TAILOR-MADE VALVES JUST FOR YOU

**Your valve idea** is at the core of every project: customised valves are tailor-made solutions, made to perfectly integrate to the specific applications of the industrial reality of destination.

New products are created, either from the existing product range or starting from scratch: we can develop **a completely new and specific design** that matches your requirements in terms of form and application, always complying with regulations.

## Ribel can supply Automated Valves.

The automation solutions we offer are **fully customised** and aim to optimise the functionality of the valve and support its integration into the plant



# About Ribel



## ZHEROLEAK | OUR PATENTED SEALING SYSTEM

Ribel has patented Zheroleak®, the **revolutionary sealing system** that allows for a single multi-purpose valve suitable for four different applications:

- **fire safe** (for fire emergencies);
- **low fugitive emission** (for dangerous and/or lethal fluids under pressure);
- **from high vacuum to full rating**;
- **in transient or steady state operating conditions.**

Thanks to Zheroleak®, you can forget about leaks and leakage: you can rely on a perfect seal, which guarantees the valve highest performance, from demanding applications to the most delicate processes.



# Trunnion valves - 40 / +200 °C



Bodies and closures of trunnion ball valves are created from **forged** material. The valves can be made in two or three pieces, full or reduced bore, flanged or welded, depending on the application.

The standard design includes **self-relief** seats, but it does not exclude other configurations: we use only the best gaskets on the market to meet your needs.

Execution	Wafer - Split Body - Side/Top Entry
Design	2 way - 3 way
Bore	Full - Reduced
Size range	DN15-DN400   1/2"-16"
Rating	PN06-PN160 IANSI150-2500
Connections	Flanged - Welded
Body	On request
Trim	On request
Seats	On request
Gaskets	On request

family **T**



# DBB valves

-40 / +200 °C



Thanks to their **compact** design, double block and bleed valves are the best solution when installation space is limited.

They can also be made flanged, with floating ball or trunnion. They include a needle valve for draining, which can easily be replaced by another type of valve, in case your application requires it.

Execution	Wafer - Flanged - Monoblock
Design	2 way
Bore	Full - Reduced
Size range	DN15-DN200   1/2"-8"
Rating	PN06-PN160   ANSI150-2500
Connections	Wafer - Threaded - Welded - Flanged
Body	On request
Trim	On request
Seats	On request
Gaskets	On request

family **D**



# Cryo valves

-196 / +200 °C



Our Cryo valves are not worried about low temperatures: they have been tested with Helium (He) and Nitrogen (N2) to reach **-196°C** required by cryogenic applications.

These valves can be made with either a floating ball or trunnion. Components and gaskets can be customised according to the application (graphite, lip seal,...).

Execution	Wafer - Flanged
Design	2 way
Bore	Full - Reduced
Size range	DN15-DN250   1/2"-10"
Rating	PN06-PN160 IANSI150-2500
Connections	Wafer - Threaded - Welded - Flanged
Body	On request
Trim	On request
Seats	On request
Gaskets	On request

family **C**



# Metal valves -100 / +500 °C



The coating and trim geometry of Metal valves are specially designed and take into account the type of application:

- **utility**
- **corrosive & dirty**
- **low temperature**
- **high temperature**

Valves can also be made with a floating ball or trunnion.

Execution	Wafer - Flanged
Design	2 way
Bore	Full - Reduced
Size range	DN15-DN250   1/2"-10"
Rating	PN06-PN160 IANSI150-2500
Connections	Wafer - Threaded - Welded - Flanged
Body	On request
Trim	On request
Seats	On request
Gaskets	On request

family **M**



# Floating valves -40 / +200 °C

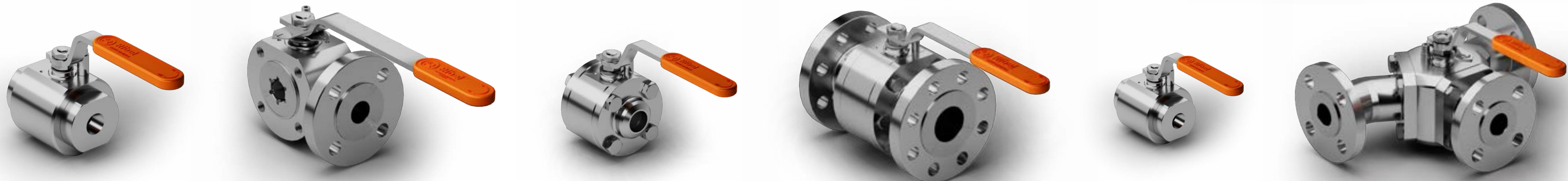
ZheroLeak  
patented by Ribel



The floating ball valve family represents our core production. Ribel floating ball valve is able to meet all specifications and applications required by the market: **compact, in-line dismantling, diverting and for high pressure.**

family **R**

Torque is under control thanks to the features of the sealing system: five specially designed stem seals and two special seals between the body and the closure have enabled Ribel to develop and patent **Zheroleak®**, an innovative sealing system that characterizes Ribel valves.



# Floating valves -40 / +200 °C

**ZheroLeak**  
patented by Ribel



## R1 Two-way wafer ball valve

Execution	Wafer
Design	2 way
Bore	Full
Size range	DN10-DN200   3/8"-8"
Rating	PN6-PN160   ANSI150-ANSI600
Connections	Wafer EN1092
Body	Std Material : CF8M, WCB, 316L, LF2; Special on request
Trim	Std Material : CF8M, 316L; Special on request
Seats	Std. Material : R.PTFE (TFM), R.PTFE + Grafite, Peek M, Devlon; Special on request
Gaskets	Std Material : AISI316 + PTFE, FKM, PTFE, Grafite; Special on request



# Floating valves -40 / +200 °C

**ZheroLeak**  
patented by Ribel



## R2 Two-way monoblock ball valve

Execution	Monoblock
Design	2 way
Bore	Full / Reduced
Size range	DN06-DN80   1/4"-3"
Rating	cl.800 - cl.2500
Connections	Threaded - Welded
Body	Std Material : CF8M, WCB, 316L, LF2; Special on request
Trim	Std Material : CF8, CF8M, 316L; Special on request
Seats	Std. Material : R.PTFE (TFM), R.PTFE + Grafite, Peek M, Devlon; Special on request
Gaskets	Std Material : AISI316 + PTFE, FKM, PTFE, Grafite; Special on request



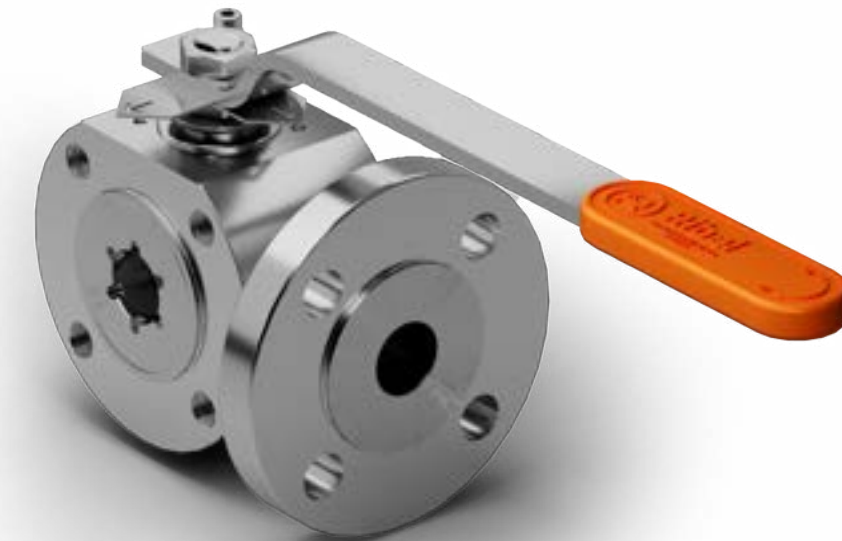
# Floating valves -40 / +200 °C

**ZheroLeak**  
patented by Ribel



## R3 Three-way ball valve

Execution	Wafer - Monoblock - Flanged
Design	3 way (L-ball, T-ball)
Bore	Full - Reduced
Size range	DN06-DN200   1/4"-8"
Rating	PN6-PN100   ANSI150-ANSI600   cl800-cl 2500
Connections	Wafer - Threaded - Welded - Flanged
Body	Std Material : 316L, LF2; Special on request
Trim	Std Material : CF8M, 316L; Special on request
Seats	Std. Material : R.PTFE (TFM), R.PTFE + Grafite, Peek M, Devlon; Special on request
Gaskets	Std Material : AISI316 + PTFE, FKM, PTFE, Grafite; Special on request



# Floating valves -40 / +200 °C

**ZheroLeak**  
patented by Ribel



## R4 Three-piece two-way ball valve

Execution	3 pieces
Design	2 way
Bore	Full - Reduced
Size range	DN06-DN100   1/4"-4"
Rating	PN40 IANSI150-600   cl800
Connections	Threaded - Welded - Flanged
Body	Std Material : CF8M, WCB, 316L, LF2; Special on request
Trim	Std Material : CF8, CF8M, 316L; Special on request
Seats	Std. Material : R.PTFE (TFM), R.PTFE + Grafite, Peek M, Devlon; Special on request;
Gaskets	Std Material : AISI316 + PTFE, FKM, PTFE, Grafite; Special on request



# Floating valves -40 / +200 °C



## R5 Two-way split body ball valve

Execution	Split Body
Design	2 way
Bore	Full - Reduced
Size range	DN15-DN200   1/2"-8"
Rating	PN06-PN160   ANSI150-2500
Connections	Flanged
Body	Std Material : 316L, LF2; Special on request
Trim	Std Material : CF8, CF8M, 316L; Special on request
Seats	Std. Material : R.PTFE (TFM), R.PTFE + Grafite, Peek M, Devlon; Special on request
Gaskets	Std Material : AISI316 + PTFE, FKM, PTFE, Grafite; Special on request



# Floating valves -40 / +200 °C

**ZheroLeak**  
patented by Ribel



## R6 | R9 Three-way ball valve Flanged at 90 °C and 120 °C

Execution	Wafer - Flanged
Design	120° 3 way
Bore	Full
Size range	DN15-DN200   1/2"-8"
Rating	PN6-PN40   ANSI150-ANSI300
Connections	Flanged at 120° ( <b>R6</b> ) - Flanged at 90° ( <b>R9</b> )
Body	Std Material : 316L, LF2; Special on request
Trim	Std Material : 316L; Special on request
Seats	Std. Material : R.PTFE (TFM), R.PTFE + Grafite, Peek M, Devlon; Special on request;
Gaskets	Std Material : AISI316 + PTFE, FKM, PTFE, Grafite; Special on request



# Floating valves -40 / +200 °C

**ZheroLeak**  
patented by Ribel



## R8 Four-way ball valve

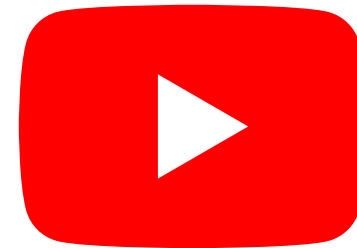
Execution	Wafer - Monoblock - Flanged
Design	4 way
Bore	Full
Size range	DN06-DN150   1/4"-6"
Rating	PN6-PN100   ANSI150-ANSI600   cl800-cl 2500
Connections	Wafer - Threaded - Welded - Flanged
Body	Std Material : 316L, LF2; Special on request
Trim	Std Material : 316L; Special on request
Seats	Std. Material : R.PTFE (TFM), R.PTFE + Grafite, Peek M, Devlon; Special on request;
Gaskets	Std Material : AISI316 + PTFE, FKM, PTFE, Grafite; Special on request



# Let's keep in touch



For further information, please do not hesitate to contact us.





Ribel

La tua idea di valvola

